
 1st
Residential
Project in 
Buttibori MIDC,
Nagpur.



 Primrose
Tower Buttibori
MIDC


A PROJECT BY NIVI INFRASTRUCTURES



Primrose Tower... Your Gateway to Serene Living in Buttibori MIDC, Nagpur!

Discover the epitome of modern living at Primrose Tower, one of the magnificent seven towers nestled in the heart of Buttibori MIDC, Nagpur. This 7-storey residential masterpiece boasts 28 meticulously designed flats, each offering the perfect blend of luxury and convenience.

Located at a prime spot, Primrose Tower enjoys the benefit of proximity to essential amenities, including markets, schools, petrol pumps, and hospitals, making it an ideal choice for families. With NMRDA sanction and RERA registration, this project exemplifies reliability and adherence to quality standards.

The 2 BHK flats come with spacious dry balconies, offering a perfect retreat after a long day. Primrose Tower offers more than just comfortable living; it ensures your safety with features like ample parking space, CCTV surveillance, 24x7 guard duty, and a state-of-the-art fire-fighting system. Additional amenities such as a modern elevator, a serene pavilion, lush gardens, rainwater harvesting, and a commitment to eco-friendliness make Primrose Tower the ultimate choice for those seeking a harmonious blend of comfort and security in their dream home. 



28

*Residential
Flats*

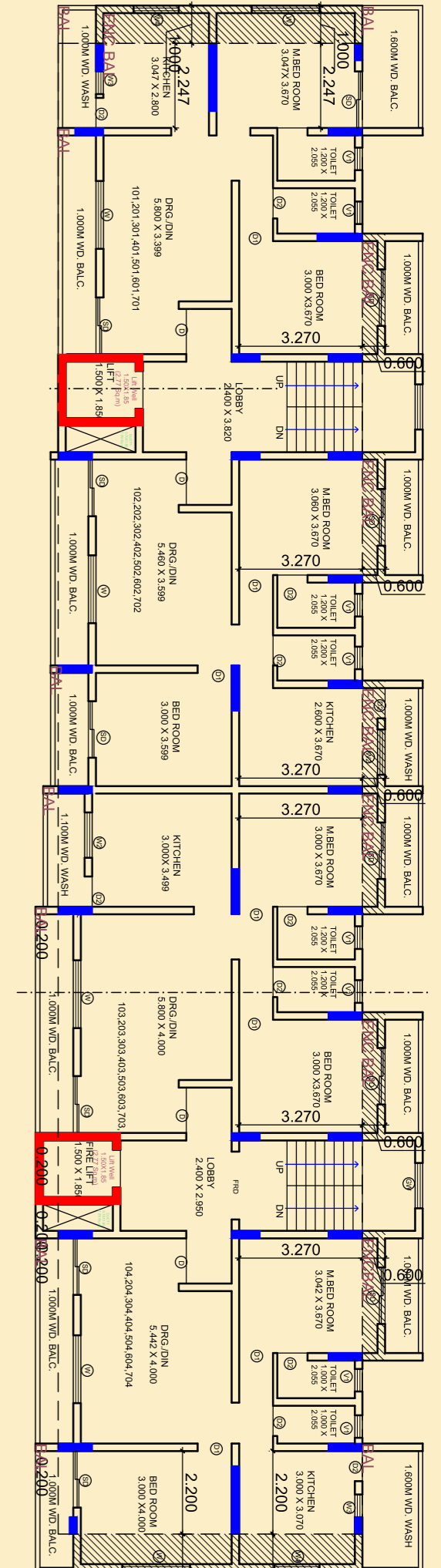
 **Primrose
Tower** Buttibori
MIDC
A PROJECT BY NIVI INFRASTRUCTURES

- Prime Location in MIDC
- Market area on walking distance
- School on 15 minutes walk
- Nearby Petrol Pump
- Hospital near 500 mtr

Book your
2BHK
Even number
Flats
 708 sq ft



FLOOR PLAN
 1st to 7th Floor



Book your
2BHK
*Odd number
Flats*
645 sq ft



 **Primrose
Tower** Buttibori
MIDC
A PROJECT BY NIVI INFRASTRUCTURES

Select your dream home **2BHK** Apartment

 708 sq ft | 645 sq ft 

Carpet Area





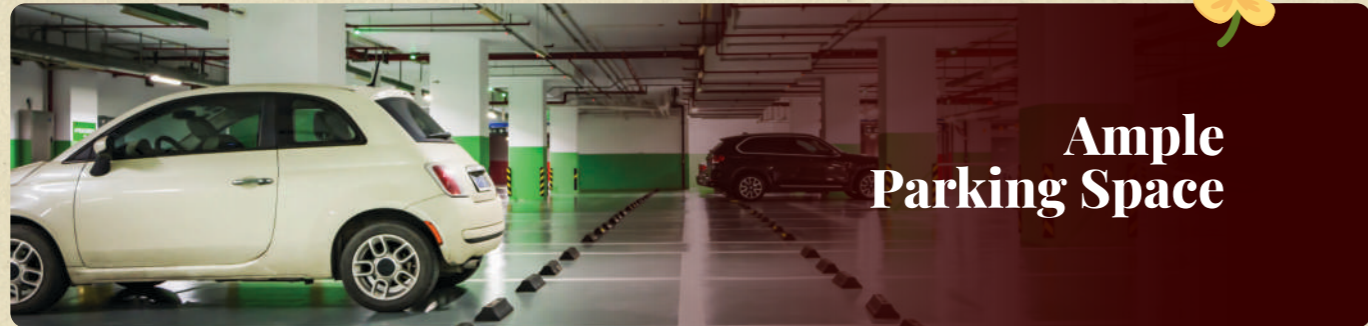
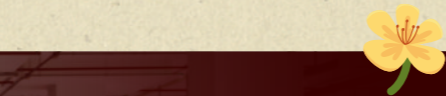
Internal Amenities

- Earthquake resistance RCC structure
- Intercom facilities with video door phone
- Fibre optic & high-speed internet for every home
- Branded Elevators
- Vitrified flooring in living room & bedroom
- Branded sanitary ware & CP fittings
- Granite platform with SS sink in the kitchen

 **Primrose
Tower** Buttibori
MIDC
A PROJECT BY NIVI INFRASTRUCTURES



Site Amenities



Ample Parking Space



CCTV Protected Zone



Sewage Treatment Plant (STP)

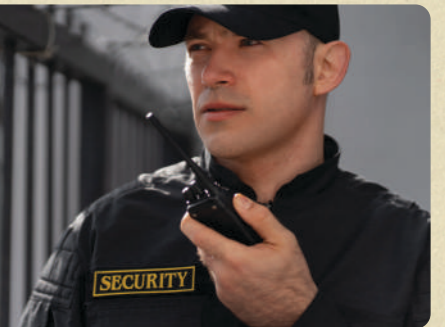


24X7 Water Availability



Branded Lift with Power Backup

Security Guard Room with 24X7 Guard duty



Pavillion for Children & Elders



Fire Fighting System



Rainwater Harvesting



Small Garden Place with Lighting



Primrose Tower
Buttibori MIDC

A PROJECT BY NIVI INFRASTRUCTURES

WE
BUILD
YOUR
DREAMS



WE BUILD YOUR DREAMS

Nivi Infrastructure has a record of not only construction, but also the creation of complete living, with the latest amenities and facilities. Providing solutions to clients, the Nivi Infra Group is a symbol of Trust & Integrity built through its quality work, timely project completion & personalized services.

Nivi Infra Group

Founded by **Mr. Rohan Rarokar** on 28 May 2005, the Nivi Infra Group is a well-diversified, value-driven enterprise.

Multiple projects have already been completed & now starting a new project...

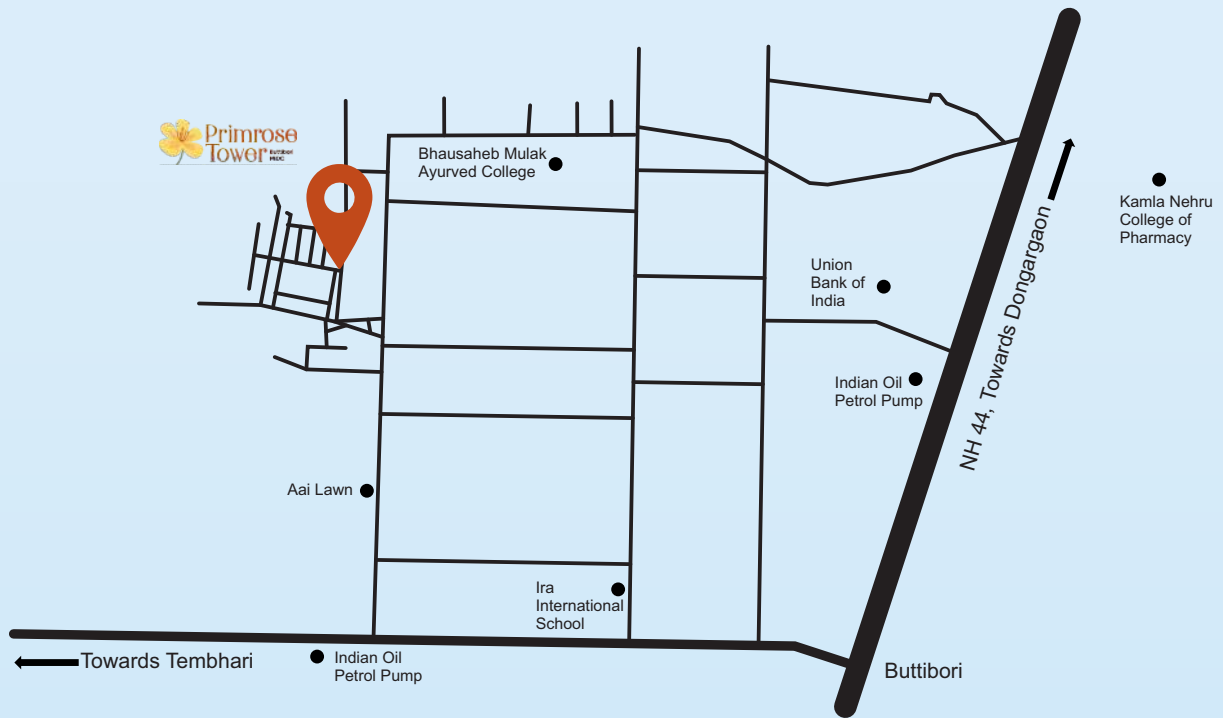


Your dream home Is waiting for you...



Site Address

Buttibori MIDC, Satgaon Road, Turakmari,
Tah. Hingana, Dist. Nagpur-441122



MahaRERA No: P50500052859
<https://maharera.mahaonline.gov.in>



Disclaimer : The information contained in the brochure is indicative & artistic conception of the proposed development & may not form part of actual offering. All plans, drawings, amenities, facilities etc are subject to approval of the concerned authorities & the developer reserves the rights to amend the same at any time registered project under MAHARERA



For booking contact,

Nivi Infrastructure

"HB Town" Ashirwad Apartment, Room No. U14,
Pardi Square, Bhandara Road Nagpur-440035

www.niviindia.com ☎ 80870 67666

Email : niviinfragp@gmail.com